



[WWW.GREYHOUNDCHROM.COM](http://WWW.GREYHOUNDCHROM.COM)



## Metallo-Organic Standards

ISO 9001:2015 Registered • ISO/IEC 17025:2005 Accredited • ISO 17034:2016 Accredited

**Distributed By:**  
Greyhound Chromatography and Allied Chemicals  
6 Kelvin Park, Birkenhead, Merseyside, CH41 1LT, UK

Tel: + 44 (0) 151 649 4000 Fax: + 44 (0) 151 649 4001  
Email: [sales@greyhoundchrom.com](mailto:sales@greyhoundchrom.com)



[WWW.GREYHOUNDCHROM.COM](http://WWW.GREYHOUNDCHROM.COM)

# Metallo-Organic Standards

## Industrial/Petrochemical Analysis by AAS, ICP, ICP-MS, and XRF

- For the determination of wear metals in oils and lubricants
- Available in paraffin 20 Base Oil, 75 Base Oil, Soybean Oil, and Xylene
- Base Mineral Oil and Soybean Oil blanks available upon request
- Contain sulfur and intended for use on ICP and ICP-MS
- Sulfur-free standards available for use with XRF technologies

**Metallo-Organic Single-Component Standards**

Component	Concentration	Matrix	Weight	Part #
Aluminum	1,000 µg/g	Mineral Oil	50 g	ALOMS-50
Aluminum	1,000 µg/g	Mineral Oil	100 g	ALOMS-100
Antimony	1,000 µg/g	Mineral Oil	50 g	SBOMS-50
Antimony	1,000 µg/g	Mineral Oil	100 g	SBOMS-100
Arsenic	50 µg/g	Mineral Oil	50 g	ASOMS-50
Arsenic	50 µg/g	Mineral Oil	100 g	ASOMS-100
Barium	1,000 µg/g	Mineral Oil	50 g	BAOMS-50
Barium	1,000 µg/g	Mineral Oil	100 g	BAOMS-100
Boron	1,000 µg/g	Mineral Oil	50 g	BBOMS-50
Boron	1,000 µg/g	Mineral Oil	100 g	BBOMS-100
Beryllium	1,000 µg/g	Mineral Oil	50 g	BEOMS-50
Beryllium	1,000 µg/g	Mineral Oil	100 g	BEOMS-100
Cadmium	1,000 µg/g	Mineral Oil	50 g	CDOMS-50
Cadmium	1,000 µg/g	Mineral Oil	100 g	CDOMS-100
Calcium	1,000 µg/g	Mineral Oil	50 g	CAOMS-50
Calcium	1,000 µg/g	Mineral Oil	100 g	CAOMS-100
Cobalt	1,000 µg/g	Mineral Oil	50 g	COOMS-50
Cobalt	1,000 µg/g	Mineral Oil	100 g	COOMS-100
Chromium	1,000 µg/g	Mineral Oil	50 g	CROMS-50
Chromium	1,000 µg/g	Mineral Oil	100 g	CROMS-100
Copper	1,000 µg/g	Mineral Oil	50 g	CUOMS-50
Copper	1,000 µg/g	Mineral Oil	100 g	CUOMS-100
Iron	1,000 µg/g	Mineral Oil	50 g	FEOMS-50
Iron	1,000 µg/g	Mineral Oil	100 g	FEOMS-100
Mercury	50 µg/g	Mineral Oil	50 g	HGOMS-50
Mercury	50 µg/g	Mineral Oil	100 g	HGOMS-100
Indium	1,000 µg/g	Mineral Oil	50 g	INOMS-50
Indium	1,000 µg/g	Mineral Oil	100 g	INOMS-100
Potassium	1,000 µg/g	Mineral Oil	50 g	KKOMS-50

## Metallo-Organic Single-Component Standards (cont'd)

Component	Concentration	Matrix	Weight	Part #
Potassium	1,000 µg/g	Mineral Oil	100 g	KKOMS-100
Lead	1,000 µg/g	Mineral Oil	50 g	PBOMS-50
Lead	1,000 µg/g	Mineral Oil	100 g	PBOMS-100
Lithium	1,000 µg/g	Mineral Oil	50 g	LIOMS-50
Lithium	1,000 µg/g	Mineral Oil	100 g	LIOMS-100
Magnesium	1,000 µg/g	Mineral Oil	50 g	MGOMS-50
Magnesium	1,000 µg/g	Mineral Oil	100 g	MGOMS-100
Manganese	1,000 µg/g	Mineral Oil	50 g	MNOMS-50
Manganese	1,000 µg/g	Mineral Oil	100 g	MNOMS-100
Molybdenum	1,000 µg/g	Mineral Oil	50 g	MOOMS-50
Molybdenum	1,000 µg/g	Mineral Oil	100 g	MOOMS-100
Nickel	1,000 µg/g	Mineral Oil	50 g	NIOMS-50
Nickel	1,000 µg/g	Mineral Oil	100 g	NIOMS-100
Phosphorus	1,000 µg/g	Mineral Oil	50 g	PPOMS-50
Phosphorus	1,000 µg/g	Mineral Oil	100 g	PPOMS-100
Selenium	1,000 µg/g	Mineral Oil	50 g	SEOMS-50
Selenium	1,000 µg/g	Mineral Oil	100 g	SEOMS-100
Sodium	1,000 µg/g	Mineral Oil	50 g	NAOMS-50
Sodium	1,000 µg/g	Mineral Oil	100 g	NAOMS-100
Silicon	1,000 µg/g	Mineral Oil	50 g	SIOMS-50
Silicon	1,000 µg/g	Mineral Oil	100 g	SIOMS-100
Silver	1,000 µg/g	Mineral Oil	50 g	AGOMS-50
Silver	1,000 µg/g	Mineral Oil	100 g	AGOMS-100
Sulfur	1,000 µg/g	Mineral Oil	50 g	SSOMS-50
Sulfur	1,000 µg/g	Mineral Oil	100 g	SSOMS-100
Tin	1,000 µg/g	Mineral Oil	50 g	SNOMS-50
Tin	1,000 µg/g	Mineral Oil	100 g	SNOMS-100
Titanium	1,000 µg/g	Mineral Oil	50 g	TIOMS-50
Titanium	1,000 µg/g	Mineral Oil	100 g	TIOMS-100
Tungsten	1,000 µg/g	Mineral Oil	50 g	WWOMS-50
Tungsten	1,000 µg/g	Mineral Oil	100 g	WWOMS-100
Vanadium	1,000 µg/g	Mineral Oil	50 g	VVOMS-50
Vanadium	1,000 µg/g	Mineral Oil	100 g	VVOMS-100
Yttrium	1,000 µg/g	Mineral Oil	50 g	YYOMS-50
Yttrium	1,000 µg/g	Mineral Oil	100 g	YYOMS-100
Zinc	1,000 µg/g	Mineral Oil	50 g	ZNOMS-50
Zinc	1,000 µg/g	Mineral Oil	100 g	ZNOMS-100
Trace Metals	—	Soybean Oil	100 g	CRM-TMSO-100
Base Mineral Oil	—	Light Mineral Oil	500 mL	BMOMS-500

## Metallo-Organic Multi-Component Standards

Components	Concentration	Matrix	Weight	Part #
Aluminum, Chromium, Copper, Iron, Lead, Magnesium, Nickel, Silicon, Silver, Sodium, Tin, Titanium	200 µg/g	Mineral Oil	50g	OMS-12-50
			100g	OMS-12-100
			200g	OMS-12-200
Aluminum, Barium, Boron, Cadmium, Calcium, Chromium, Copper, Iron, Lead, Magnesium, Manganese, Molybdenum, Nickel, Phosphorus, Silicon, Silver, Sodium, Tin, Titanium, Vanadium, Zinc	200 µg/g	Mineral Oil	50g	OMS-21-50
			100g	OMS-21-100
			200g	OMS-21-200

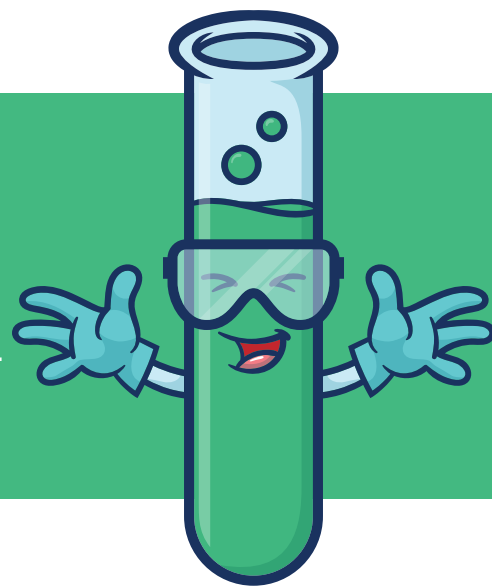
### Metal Extraction Customs

We now offer custom standards of metals extracted into various organic solvents. These standards are verified via ICP analysis and come with NIST SRM-traceable Certificates of Analysis.

To obtain a quotation for a metal extracted custom standard, you can use our Inorganic quote form included in this literature or contact us with your specifications.

### Packaging Options

We stock inorganic solutions in 50 mL, 100 mL, 250 mL, and 500 mL sizes. The 50 mL size is designed for those laboratories who need a smaller volume of solution, thereby limiting waste disposal costs. Our organic standards are available in 1 mL, 2 mL, 5 mL, and 10 mL ampules. Both smaller and larger volumes are also available. Please contact us if you require volumes outside our standard offering.





## Quote Request Form for ICP Inorganic Custom Standards

*Company Name:		*Contact Name:	
*Phone:		*E-mail:	
*Fax:		Preferred Method of Contact:	
*Analytical Method/Intended Use:			
*Concentration Units:	*Total Volume Required:	*Bottled As:	
*Desired Matrix/Solvent: (Matrix may change due to compatibility)			

Fill in desired concentration of required elements/components. Use the blank/other fields to fill in any components not listed.

Comp	Conc.	Comp	Conc.	Comp	Conc.	Comp	Conc.	Comp	Conc.
Al		In		Ru		Bromide			
Sb		Ir		Sm		Chloride			
As		Fe		Sc		Cyanide			
Ba		La		Se		Iodide			
Be		Pb		Si		Phosphate			
Bi		Li		Ag		Sulfate			
B		6Li		Na		Other			
Cd		Lu		Sr					
Ca		Mg		S					
C		Mn		Ta					
Ce		Hg		Te					
Cs		Mo		Tb					
Cr**		Nd		Tl					
Co		Ni		Th					
Cu		Nb		Tm					
Dy		Os		Sn					
Er		Pd		Ti					
Eu		P		W					
Gd		Pt		U***					
Ga		K		V					
Ge		Pr		Yb					
Au		Re		Y					
Hf		Rh		Zn					
Ho		Rb		Zr					
Special Instructions:									

\*\* Cr is provided as Cr (III) + certified as total Cr.

\*\*\* Depleted, Natural U available upon request.